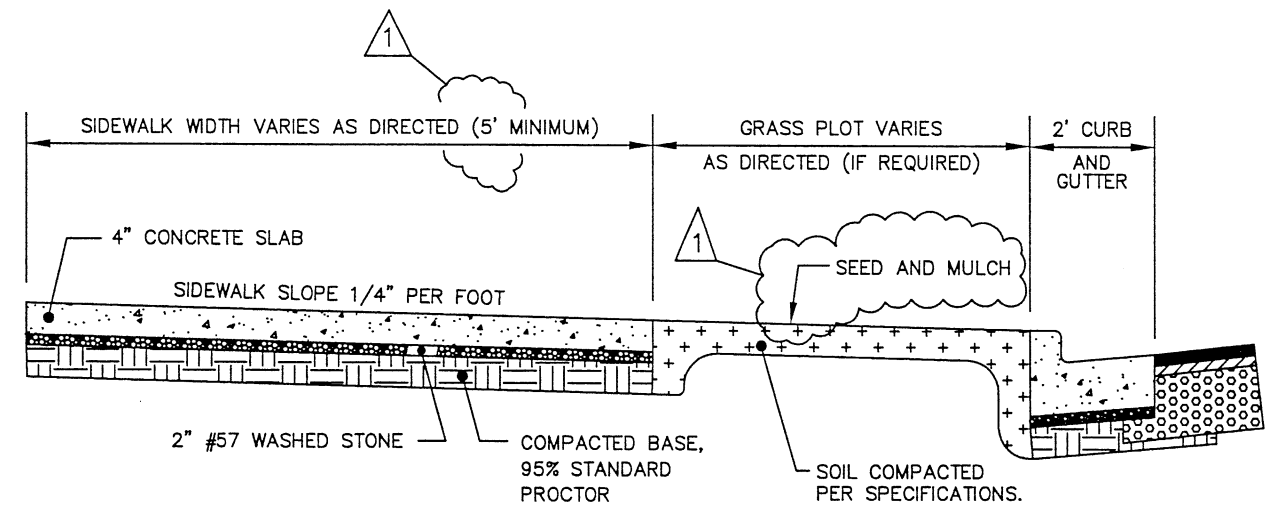
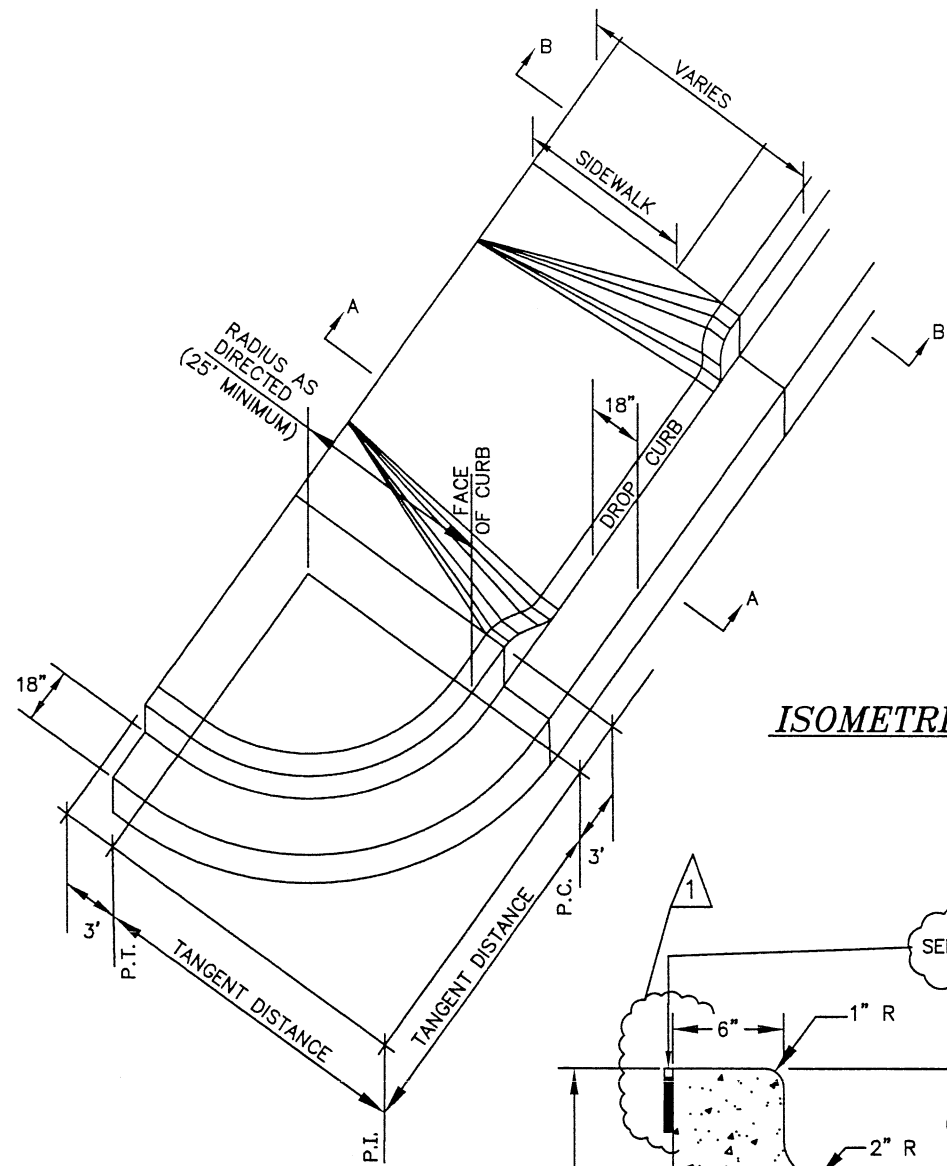
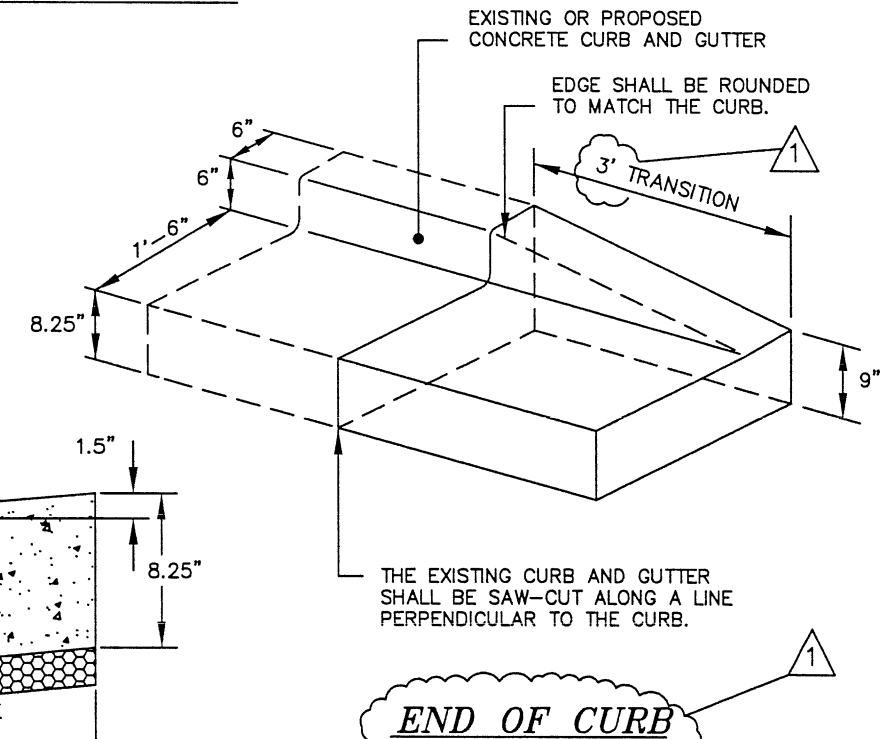


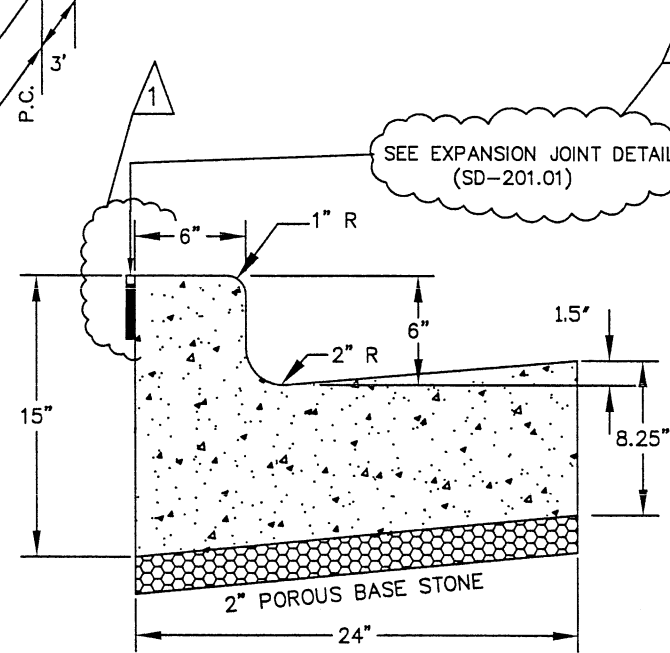
SECTION A-A
(SEE STANDARD SD-202.02.)



SECTION B-B

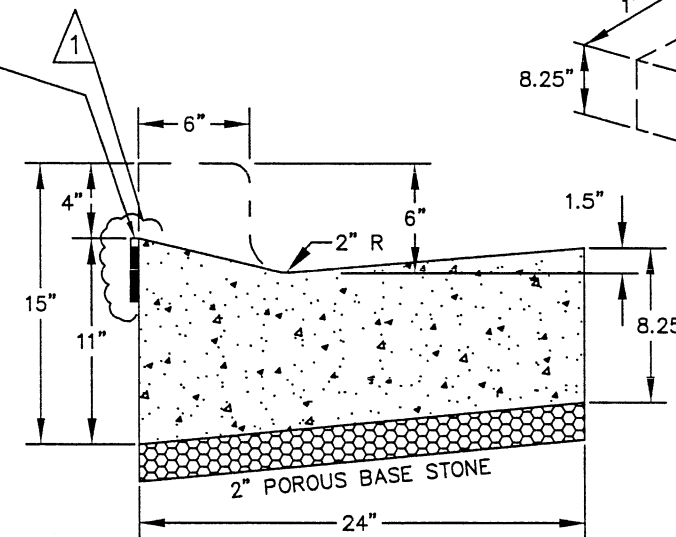


ISOMETRIC VIEW



TYPICAL SECTION

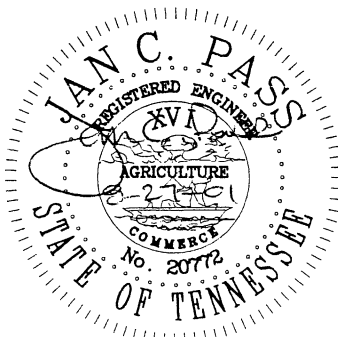
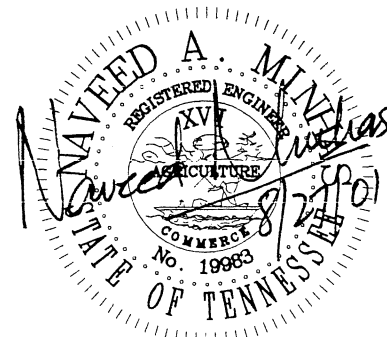
TYPE "A", CONCRETE CURB AND GUTTER



TYPICAL SECTION

TYPE "A", CONCRETE DROP CURB

* NOTE
SEE NOTES ON STANDARD SD-203.01.



NO.	REVISION	DATE
1	REVISIONS AS MARKED OR CLOUDED	8/24/01
0	INITIAL ISSUE	12/10/99

CITY OF CHATTANOOGA AND HAMILTON COUNTY
CONCRETE CURB AND GUTTER (TYPE "A")

DATE OF ORIGINAL ISSUE
DECEMBER 10, 1999

STANDARD NUMBER : **SD-202.01**