

PIPE DIAMETER "D" (INCHES)	TRENCH WIDTH "BD" (FEET)	TRENCH * VOLUME PER FOOT OF DEPTH	CLASS "C" BEDDING FOR CONCRETE AND DUCTILE IRON		ROCK TRENCH BEDDING	
			QTY. (C.Y.)	"S" IN (IN.)	CONC. & D.I.	PVC, ETC.
6 **	2.00	0.074	0.025	4-1/4	0.025	0.037
8	2.33	0.086	0.030	4-1/2	0.030	0.043
10	2.50	0.093	0.036	5-0	0.049	0.062
12	2.67	0.099	0.039	5-1/4	0.054	0.066
15	3.00	0.111	0.046	5-3/4	0.063	0.074
18	3.25	0.120	0.053	6-1/4	0.069	0.080
24	3.83	0.142	0.072	7-1/2	0.108	0.118
30	4.42	0.164	0.098	9-0	0.121	0.137
36	5.67	0.210	0.148	10-1/2	0.194	-----
42	6.25	0.231	0.184	12-0	0.209	-----
48	6.83	0.253	0.223	13-1/2	0.223	-----
54	7.42	0.275	0.226	15-0	0.236	-----
60	8.00	0.296	0.312	16-1/2	0.247	-----
66	8.58	0.318	0.362	18-0	0.258	-----
72	9.17	0.340	0.416	19-1/2	0.268	-----
78	9.75	0.361	0.458	20-1/2	0.291	-----
84	10.33	0.383	0.510	21-3/4	0.315	-----
96	11.50	0.426	0.604	23-3/4	0.365	-----

* ALL VOLUMES IN CUBIC YARDS/LINEAR FOOT.

** QUANTITIES AND DIMENSIONS FOR 6" SERVICE LINE SHALL APPLY TO 4" SERVICE LINE ALSO.

QUANTITIES FOR CLASS "B" AND ROCK TRENCH BEDDING ARE THE QUANTITIES IN EXCESS OF THOSE REQUIRED FOR CLASS "C" BEDDING.

SCHEDULE OF BEDDING

PIPE DIAMETER "D" (INCHES)	TRENCH WIDTH TOP OF PIPE "BD" (FT.)	CONCRETE PIPE C-76 CLASS III	CONCRETE PIPE C-76 CL IV AWWA C-301 D.I.P.	PVC D-3034 AND ASTM F679
CLASS "C" BEDDING (STANDARD BEDDING)				
4"	2.00	---	---	NL
6"	2.00	---	---	NL
8"	2.33	---	---	NL
10"	2.50	---	---	NL
12"	2.67	---	13	NL
15"	3.00	---	12	NL
18"	3.25	---	13	NL
21"	3.54	---	14	NL
24"	3.83	---	15	
27"	4.08	11	15	
30"	4.42	11	16	
33"	4.75	11	16	
36"	5.67	10	14	
42"	6.25	11	16	
48"	6.83	12	17	
54"	7.42	13	18	
60"	8.00	13	18	
66"	8.58	14	19	
72"	9.17	15	20	
78"	9.75	16	21	
84"	10.33	16	21	
90"				

NL=NO LIMIT TO BOTTOM OF PIPE

BD=MAXIMUM TRENCH WIDTH AT 12" ABOVE TOP OF PIPE. IF DITCH IS CUT WIDER THAN BD SHOWN, THE CONTRACTOR, AT HIS OWN EXPENCE, WILL BE REQUIRED TO INCREASE BEDDING TO COMPENSATE FOR ADDITIONAL LOAD ON THE PIPE.

(PERMISSIBLE DEPTH (IN FEET) TO BOTTOM OF PIPE FOR SATURATED CLAY EARTH LOAD, 130 LBS./CU. FT. (SATURATED CLAY).)

NOTES

STANDARD BEDDING

MATERIAL SHALL BE PLACED AS SHOWN BY THE STANDARD DETAILS FOR THE TYPE OF PIPE USED. THE BEDDING SHALL BE INCLUDED FOR PAYMENT IN THE UNIT PRICE BID PER LINEAR FOOT OF PIPE FOR VARIOUS TYPES, SIZES, AND DEPTHS LISTED IN THE BID SCHEDULE.

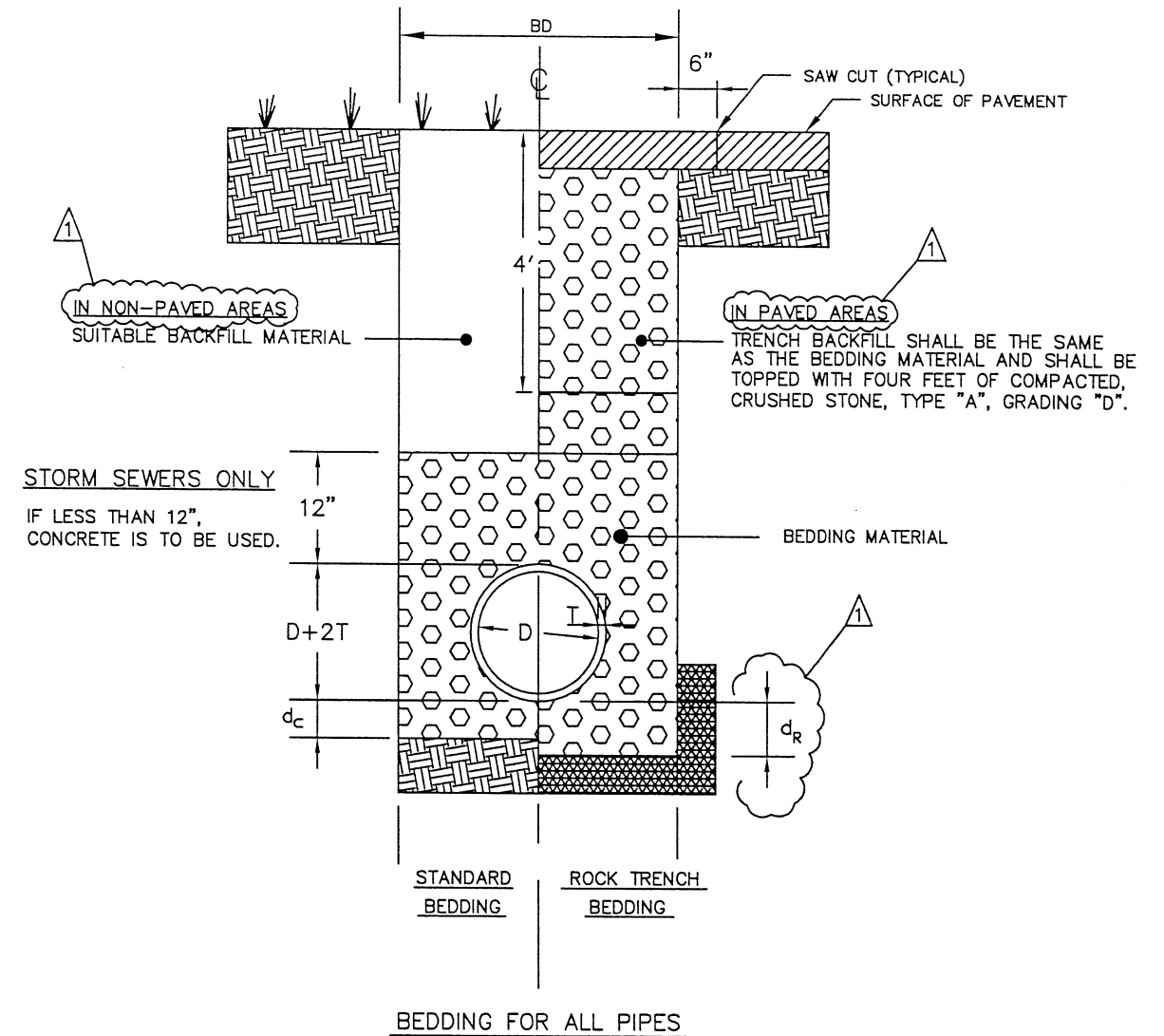
CLASS "B" BEDDING MATERIAL (SECTION 204.04, TENNESSEE D.O.T. SPECIFICATIONS)- MATERIAL FOR CLASS "B" BEDDING FOR PIPE CULVERTS SHALL CONSIST OF SAND OR A NATURAL SANDY SOIL, ALL OF WHICH PASSES A 3/8-INCH SIEVE AND NOT MORE THAN TEN PERCENT PASSES A NO. 200 SIEVE; OR STONE, GRAVEL, CHERT, OR SLAG MEETING THE GRADING REQUIREMENTS FOR EITHER GRADING C, D, OR E OF SUBSECTION 903.05.

IN ROCK CUTS OR OTHER AREAS DESIGNATED BY THE ENGINEER WHERE A FREE DRAINAGE BEDDING OR BACKFILL MATERIAL IS REQUIRED, THE MATERIAL SHALL BE CRUSHED STONE, CRUSHED SLAG, OR WASHED GRAVEL MEETING THE REQUIREMENTS OF SUBSECTION 903.17.

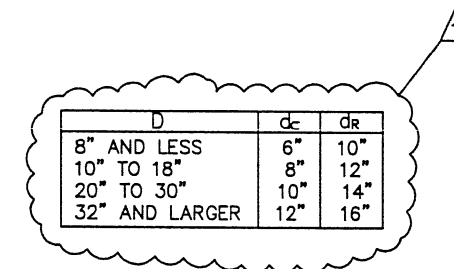
PVC PIPE BEDDING MATERIAL-NO. 7 WASHED STONE (SECTION 903.22, TENNESSEE D.O.T. SPECIFICATIONS).

ROCK TRENCH BEDDING

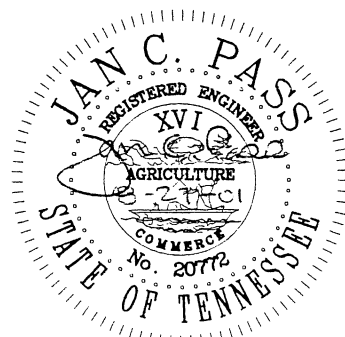
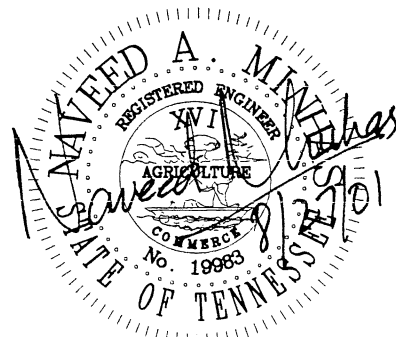
MATERIAL SHALL BE SAME AS FOR CLASS "B" BEDDING AND SHALL BE PLACED AS SHOWN BY THE STANDARD DETAILS FOR THE TYPE OF PIPE USED. QUANTITIES FOR THE ROCK TRENCH BEDDING ARE THE AMOUNTS IN EXCESS OF THOSE REQUIRED FOR CLASS "C" BEDDING.



TRENCH DETAILS



F:\STDDWGS\TrenchDetails\STDTRNCH.dwg



NO.	REVISION	DATE
1	REVISIONS AS MARKED OR CLOUDED	8/24/01
0	INITIAL ISSUE	12/10/99

CITY OF CHATTANOOGA AND HAMILTON COUNTY

TRENCH DETAILS AND BEDDING (STORM/SANITARY SEWERS)

DATE OF ORIGINAL ISSUE
DECEMBER 10, 1999

STANDARD NUMBER: **SD-307.01**