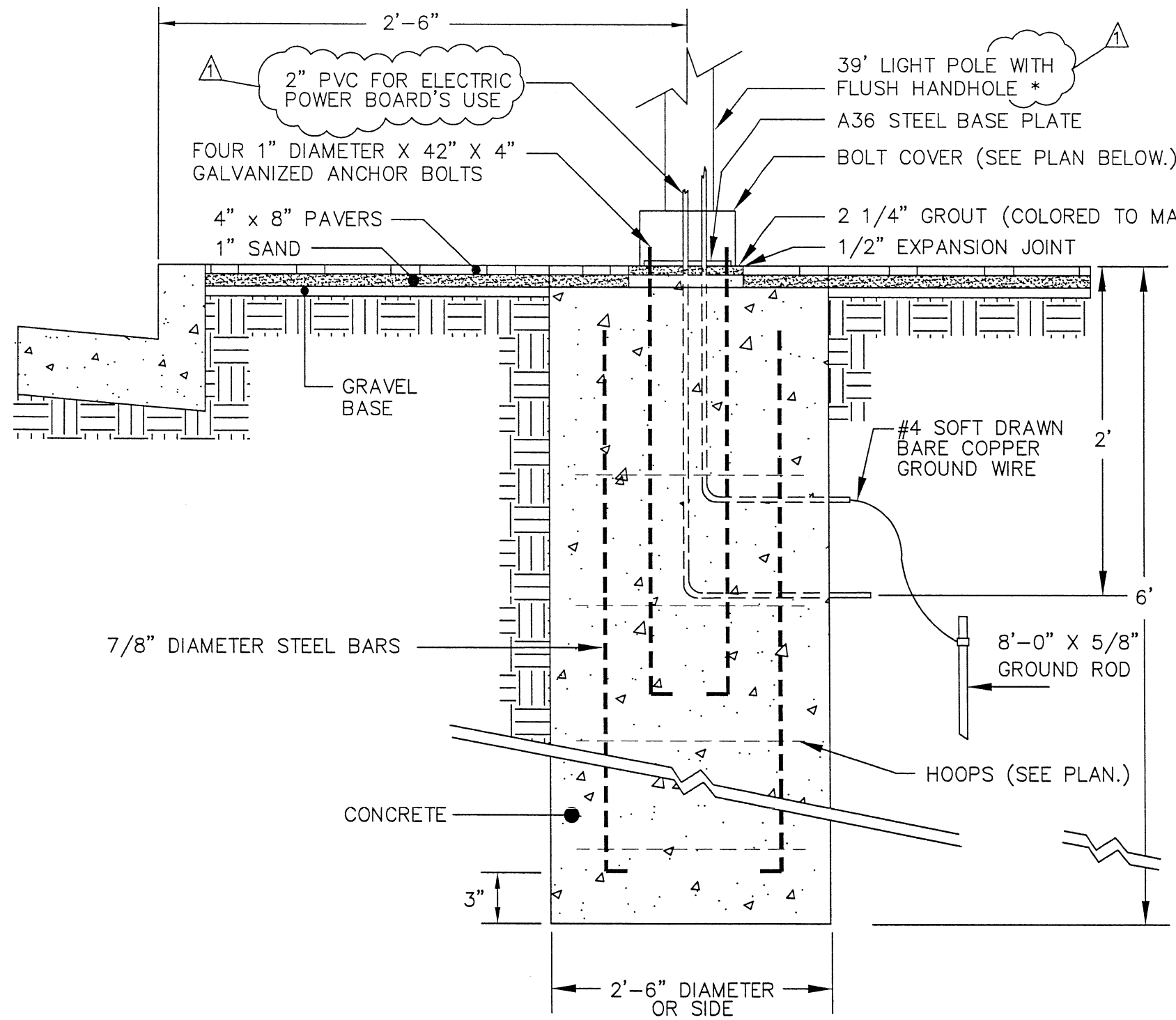
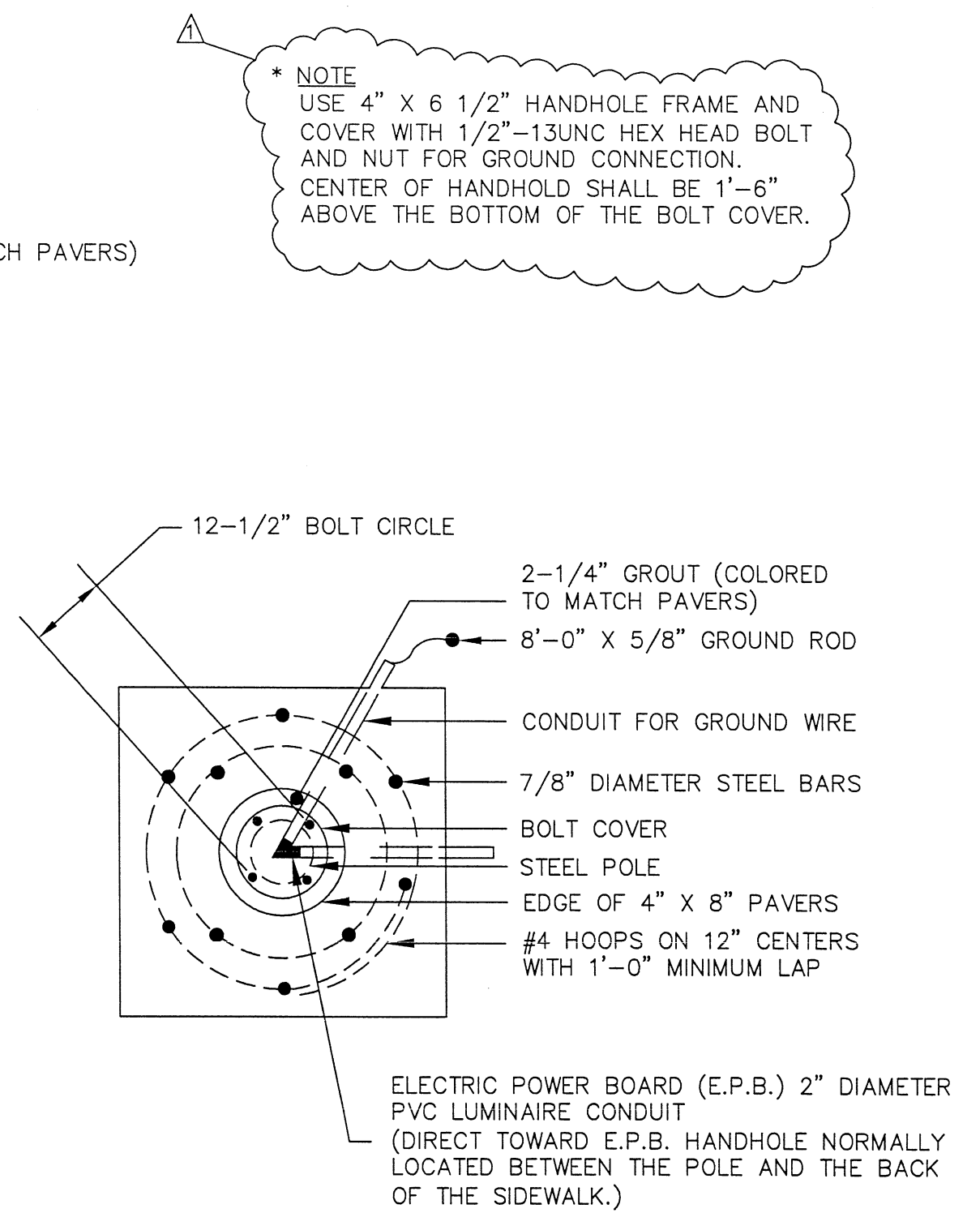


STDDWGS\Foundation Details - 39' Pole\FOUNDITLS.dwg

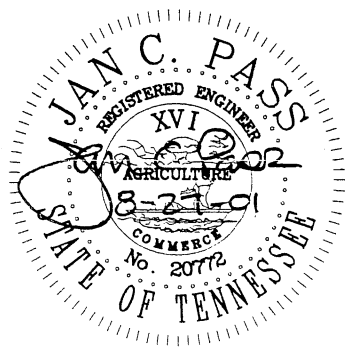
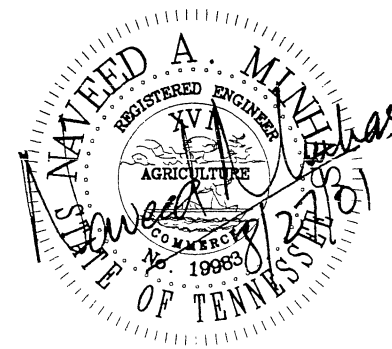


ELEVATION



PLAN

*** NOTE**
 USE 4" X 6 1/2" HANDHOLE FRAME AND COVER WITH 1/2"-13UNC HEX HEAD BOLT AND NUT FOR GROUND CONNECTION. CENTER OF HANDHOLE SHALL BE 1'-6" ABOVE THE BOTTOM OF THE BOLT COVER.



NO.	REVISION	DATE
1	REVISIONS AS MARKED OR CLOUDED	8/24/01
0	INITIAL ISSUE	12/10/99

CITY OF CHATTANOOGA AND HAMILTON COUNTY	
<i>FOUNDATION DETAILS (39' STREETLIGHT POLE)</i>	
DATE OF ORIGINAL ISSUE DECEMBER 10, 1999	STANDARD NUMBER: SD-506.01