

1ST READING

12-17-10

2ND READING

12-14-10

MR-2010-116

Chattanooga Neighborhood Enterprise, Inc.

By Jean Lamb

ORDINANCE NO. 12453

AN ORDINANCE CLOSING AND ABANDONING A RIGHT-OF-WAY EASEMENT ALONG THE SOUTH SIDE OF 17<sup>TH</sup> STREET AND ADJACENT TO 1702 LONG STREET, MORE PARTICULARLY DESCRIBED HEREIN, SUBJECT TO CERTAIN CONDITIONS.

SECTION 1. BE IT ORDAINED BY THE CITY COUNCIL OF THE CITY OF CHATTANOOGA, TENNESSEE, That there be and is hereby closed and abandoned a right-of-way easement along the south side of 17<sup>th</sup> street and adjacent to 1702 Long Street which was for a proposed street right-of-way that was not constructed, more particularly described below and as shown on the maps attached hereto and made a part hereof by reference:

Abandonment of a portion of the southern right-of-way of the Unit Block of West 17<sup>th</sup> Street beginning with its intersection with the northwest corner of Lot A, Final Plat of Montague's Subdivision of Long Street, Plat Book 91, Page 133 thence northeast some 22 feet to a point, thence southeast some 124 feet to a point, thence southwest some 30 feet, thence 124 feet northeast, the point of beginning. This portion of said right-of-way separates Lots A and B from the Unit Block of West 17<sup>th</sup> Street. Tax Map 145LD-B-001 and 001.01.

SECTION 2. BE IT FURTHER ORDAINED, That this closure and abandonment shall be subject to:

1. Abandonment of right-of-way easement shall be as identified in the plat book from the back of abandoned right-of-way in Ordinance No. 11420 and Case No. 2003-049 to a point identified in Plat Book 91, Page 133, ROHC;
2. Retention of all utility easements and routing rights, in perpetuity, and at the Utility's discretion; and

3. A corrective plat shall be recorded with the Hamilton County Assessor's Office.

SECTION 3. BE IT FURTHER ORDAINED, That this Ordinance shall take effect two (2) weeks from and after its passage.

PASSED on Second and Final Reading

December 14, 2010.

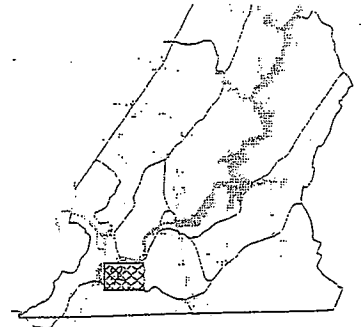
  
\_\_\_\_\_  
CHAIRPERSON

APPROVED:  DISAPPROVED: \_\_\_\_\_

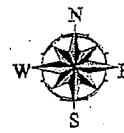
DATE: December 14, 2010.

  
\_\_\_\_\_  
MAYOR

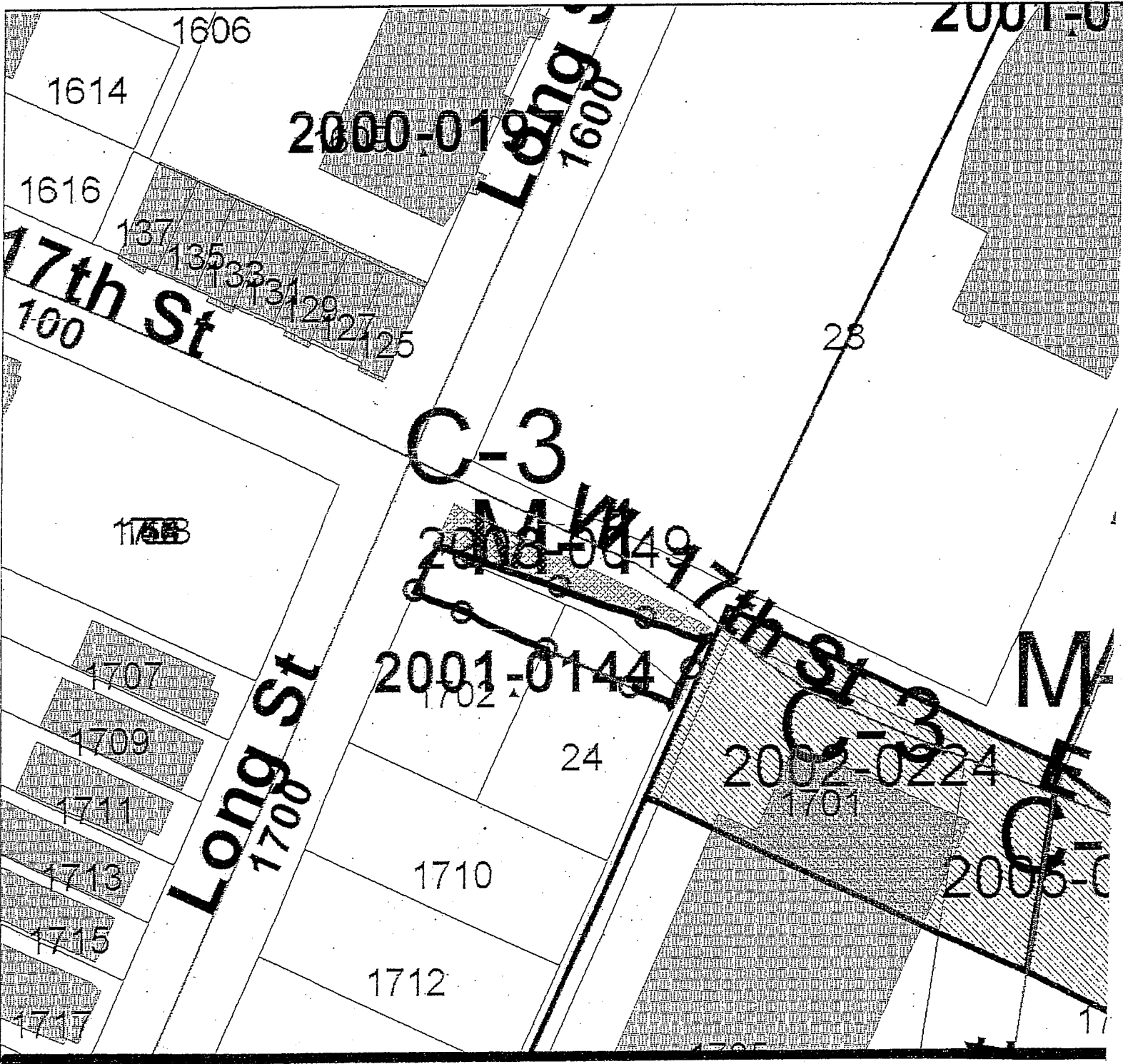
/add



CHATTANOOGA  
CASE NO.: 2010-0116  
PC MEETING DATE: 9/13/2010  
MR ABANDON STREET R-O-W



1 in. = 60.0 feet



PLANNING COMMISSION RECOMMENDATION FOR CASE NO. 2010-116: Approve, subject to approval of Traffic Engineering and all public utilities.

Chattanooga, Tennessee, TN 37404  
Phone: 423-840-0108

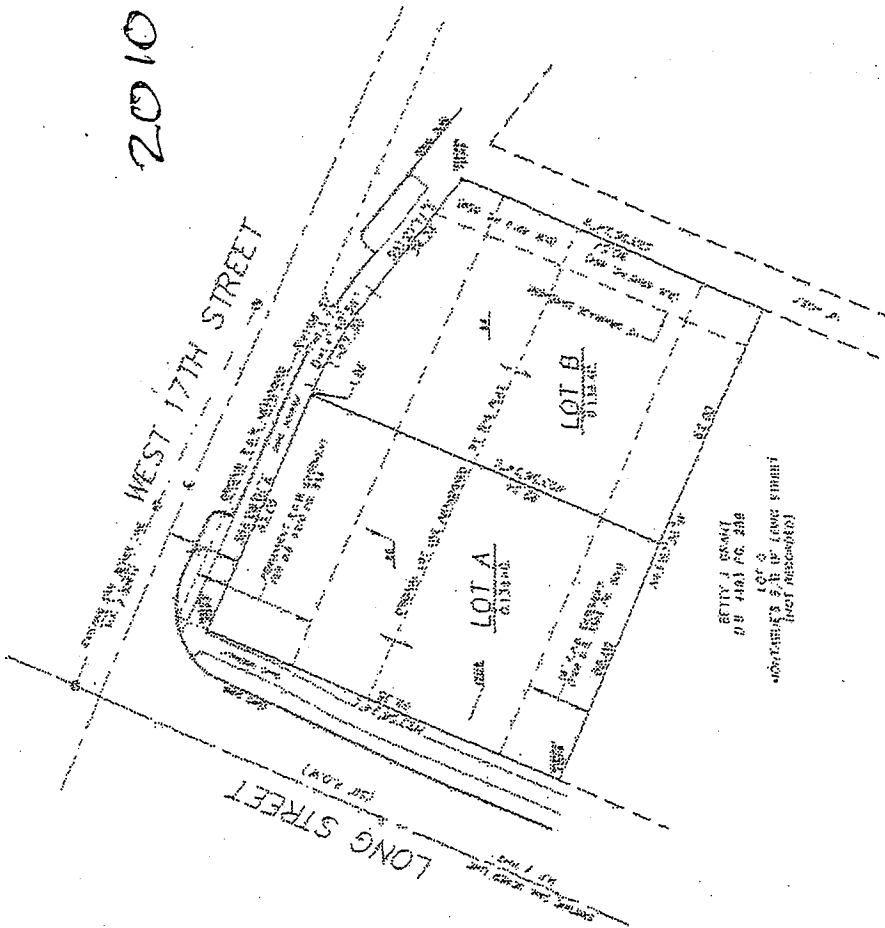


APPROVED  
By \_\_\_\_\_  
Date \_\_\_\_\_

SEAL OF THE CITY OF CHATTANOOGA  
TENNESSEE  
1805

- GENERAL NOTES**
1. Based on S-1
  2. Have not indicated a grid
  3. Have not indicated a grid
  4. Have not indicated a grid
  5. Have not indicated a grid
  6. Have not indicated a grid
  7. Have not indicated a grid
  8. Have not indicated a grid
  9. Have not indicated a grid
  10. Have not indicated a grid
  11. Have not indicated a grid
  12. Have not indicated a grid
  13. Have not indicated a grid
  14. Have not indicated a grid
  15. Have not indicated a grid
  16. Have not indicated a grid
  17. Have not indicated a grid
  18. Have not indicated a grid
  19. Have not indicated a grid
  20. Have not indicated a grid
  21. Have not indicated a grid
  22. Have not indicated a grid
  23. Have not indicated a grid
  24. Have not indicated a grid
  25. Have not indicated a grid
  26. Have not indicated a grid
  27. Have not indicated a grid
  28. Have not indicated a grid
  29. Have not indicated a grid
  30. Have not indicated a grid
  31. Have not indicated a grid
  32. Have not indicated a grid
  33. Have not indicated a grid
  34. Have not indicated a grid
  35. Have not indicated a grid
  36. Have not indicated a grid
  37. Have not indicated a grid
  38. Have not indicated a grid
  39. Have not indicated a grid
  40. Have not indicated a grid
  41. Have not indicated a grid
  42. Have not indicated a grid
  43. Have not indicated a grid
  44. Have not indicated a grid
  45. Have not indicated a grid
  46. Have not indicated a grid
  47. Have not indicated a grid
  48. Have not indicated a grid
  49. Have not indicated a grid
  50. Have not indicated a grid
  51. Have not indicated a grid
  52. Have not indicated a grid
  53. Have not indicated a grid
  54. Have not indicated a grid
  55. Have not indicated a grid
  56. Have not indicated a grid
  57. Have not indicated a grid
  58. Have not indicated a grid
  59. Have not indicated a grid
  60. Have not indicated a grid
  61. Have not indicated a grid
  62. Have not indicated a grid
  63. Have not indicated a grid
  64. Have not indicated a grid
  65. Have not indicated a grid
  66. Have not indicated a grid
  67. Have not indicated a grid
  68. Have not indicated a grid
  69. Have not indicated a grid
  70. Have not indicated a grid
  71. Have not indicated a grid
  72. Have not indicated a grid
  73. Have not indicated a grid
  74. Have not indicated a grid
  75. Have not indicated a grid
  76. Have not indicated a grid
  77. Have not indicated a grid
  78. Have not indicated a grid
  79. Have not indicated a grid
  80. Have not indicated a grid
  81. Have not indicated a grid
  82. Have not indicated a grid
  83. Have not indicated a grid
  84. Have not indicated a grid
  85. Have not indicated a grid
  86. Have not indicated a grid
  87. Have not indicated a grid
  88. Have not indicated a grid
  89. Have not indicated a grid
  90. Have not indicated a grid
  91. Have not indicated a grid
  92. Have not indicated a grid
  93. Have not indicated a grid
  94. Have not indicated a grid
  95. Have not indicated a grid
  96. Have not indicated a grid
  97. Have not indicated a grid
  98. Have not indicated a grid
  99. Have not indicated a grid
  100. Have not indicated a grid

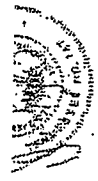
2010-116



MONTAGUI  
CHATTANOOGA

GRAPHIC SCALE  
0 10 20 30 40 50 60 70 80 90 100

100% SCALE



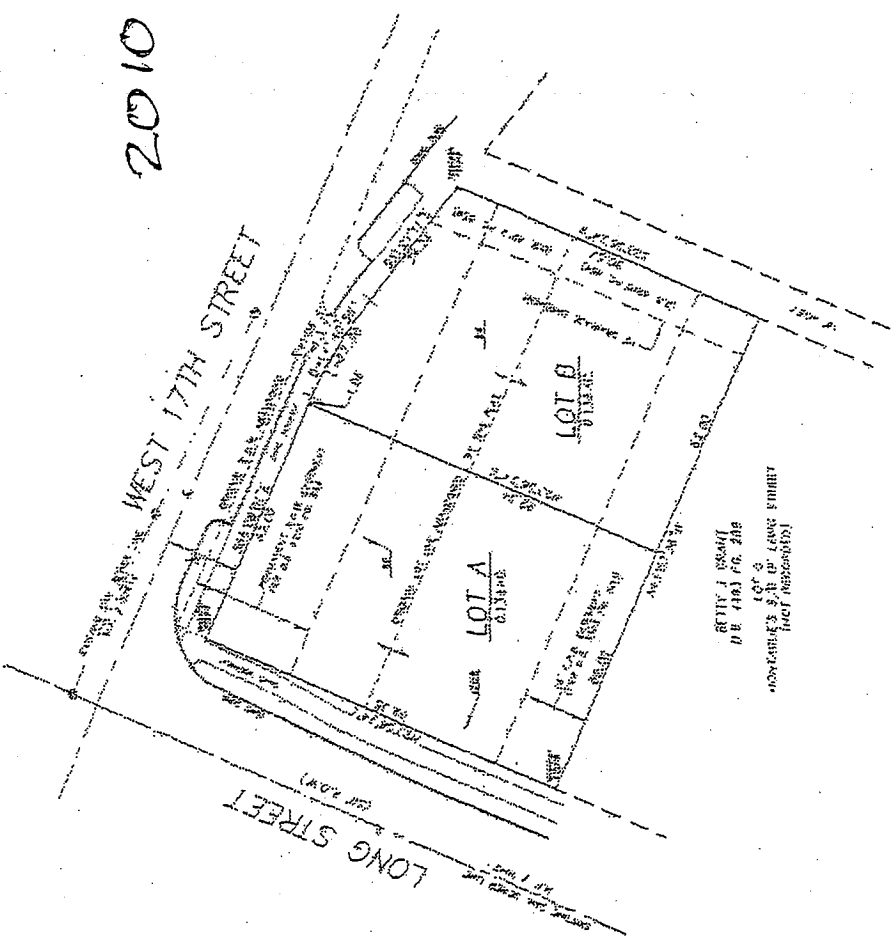
APPROVED BY: [Signature]

DATE: [Date]

**GENERAL NOTES**

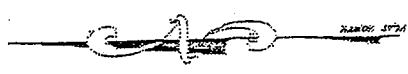
1. Survey is in accordance with the City of Chattanooga, Tennessee, Ordinance No. 1000, as amended.
2. All lots shown on this plan are subject to the City of Chattanooga, Tennessee, Ordinance No. 1000, as amended.
3. The City of Chattanooga, Tennessee, Ordinance No. 1000, as amended, shall apply to all lots shown on this plan.
4. The City of Chattanooga, Tennessee, Ordinance No. 1000, as amended, shall apply to all lots shown on this plan.
5. The City of Chattanooga, Tennessee, Ordinance No. 1000, as amended, shall apply to all lots shown on this plan.
6. The City of Chattanooga, Tennessee, Ordinance No. 1000, as amended, shall apply to all lots shown on this plan.
7. The City of Chattanooga, Tennessee, Ordinance No. 1000, as amended, shall apply to all lots shown on this plan.
8. The City of Chattanooga, Tennessee, Ordinance No. 1000, as amended, shall apply to all lots shown on this plan.
9. The City of Chattanooga, Tennessee, Ordinance No. 1000, as amended, shall apply to all lots shown on this plan.
10. The City of Chattanooga, Tennessee, Ordinance No. 1000, as amended, shall apply to all lots shown on this plan.

2010-116



REPLY TO: [Name]  
 OR: [Address]  
 CONTACT: [Phone Number]  
 (NOT TO BE USED FOR ANY OTHER PURPOSE)

Chattanooga, Tennessee, 37402  
 Phone: 423-498-0100



GRAPHIC SCALE



Abandonment Case #2010-116  
Jean Lamb for Chattanooga  
Neighborhood Enterprise Inc.

Abandonment Case #2003-049  
Ordinance No. #11420

SUBJECT EASEMENT

LONG STREET  
(50' R.O.W.)

WEST 17TH STREET

EXISTING SAN. SEWER LINE  
M.F. # 7042

EXISTING SAN. SEWER LINE  
M.F. # 52614

BETTY J. GRANT  
D.B. 4493 PG. 289  
LOT C  
MONTAGUE'S S/D OF LONG STREET  
(NOT RECORDED)

LOT A  
0.133AC.

LOT B  
0.133AC.

18' E.P.B. EASEMENT  
(PER D.B. 5596 PG. 500)  
62.00

PERMANENT R.O.W. EASEMENT  
PER D.B. 8210 PG. 859  
62.00

10' DRAINAGE EASEMENT  
(D.B. 6210 PG. 854)  
80.57

(D.B. 6210 PG. 859)

S23°56'24"W

N23°56'24"E  
92.35

N23°56'24"E  
92.54

S51°27'11"E  
34.24  
R=106.57  
D=74.37  
L=27.30  
1.86

N65°37'36"W  
62.00

1702

BY THIS PLAT

24

IRREGULAR PLAND

CONC. CURB  
CONC. SIDEWALK

IRREGULAR PLAND

ORIGINAL R.O.W. ABANDONED

CONC. SIDEWALK

IRREGULAR PLAND

CONC. CURB  
IRREGULAR PLAND

LEY